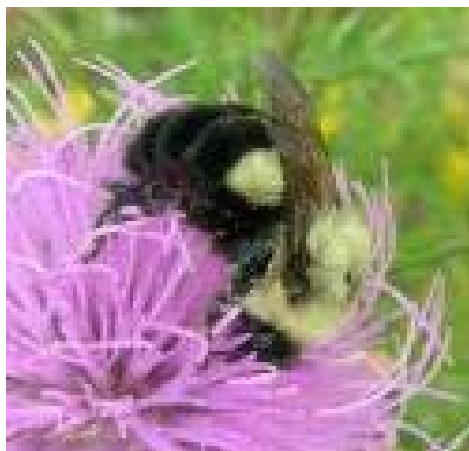


The Rusty-patched Bumble Bee

Bombus affinis



The Rusty-patched Bumble Bee is a very rare species whose numbers have declined in recent years across much of eastern North America. It is now only known to occur in Pinery! Rusty-patched Bumble Bees have a small rust-colored patch on the middle of their second abdominal segment. They are excellent pollinators of wildflowers, cranberries, and other important crops, including plum, apple, alfalfa and onion seed.



Parks and other greenspaces are increasingly important to the vitality of The Rusty-patched Bumble Bee. To learn more about The Rusty-patched Bumble Bee and conservation activities please visit www.pinerypark.on.ca